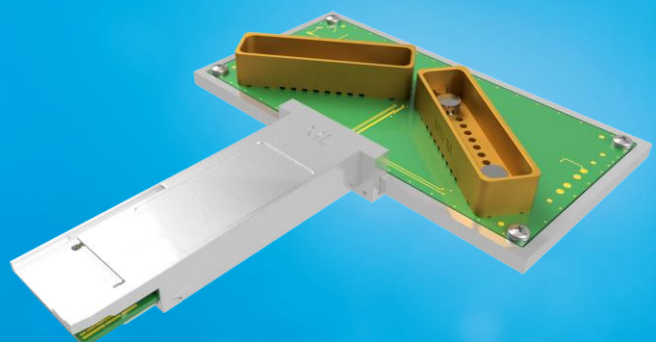


Innovation for the next generation



ML4062-HCB-112-MXPM70

QSFP-DD800 Host Compliance
Board

Summary

As 400G claims more and more of the data center market share, the industry is already planning for still greater speeds in 800G. Increased speeds bring with them new form factors, of which QSFP-DD800 has emerged as a leading standard to drive the development of 800G interconnectivity. The ML4062-HCB-112-MXPM70 has access to all 8 TX and RX channels in one fixture, with MXPM70 cables which can be fully de-embedded for optimal flexibility in conducting compliance measurements.

The datasheet is a quick overview of the QSFP-DD800 host compliance board (HCB) which enables the testing of system host ports. It is able to access high-speed host lanes via RF connectors. It can also access and trigger low-speed control signals, all while complying with IEEE/OIF Specifications.

QSFP-DD800

ML4062-HCB-112-MXPM70

Key Features

- 1 board with 8 channels: 8 TX and the corresponding 8 RX
- De-embedding MXPM70 cables
- Low insertion loss deviation, low crosstalk
- High performance signal integrity traces
- Compliant with IEEE 802.3ck
- QSFP-DD MSA Form Factor
- Same low Insertion Loss for all traces
- Supports 8x112G
- Built with high performance PCB Material
- High speed signals accessible through MXPM70 connectors
- Matched trace lengths of 5972.48 mils
- Uses 2 MXPM70 cables

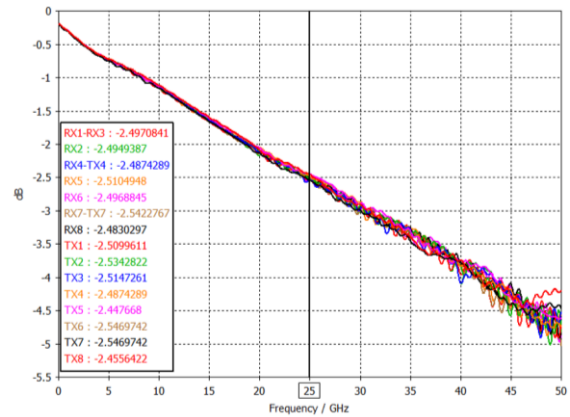


Figure 1: ML4062-HCB-112-MXPM70 Insertion Loss

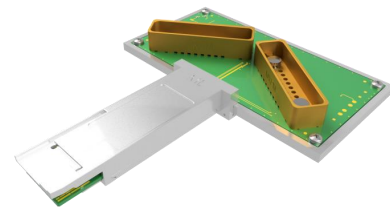


Figure 2: ML4062-HCB-112-MXPM70

Ordering Information

Interconnects	Description
ML4062-HCB-112-MXPM70	QSFP-DD800 HCB MXPM70 connector

Recommended Accessories

Interconnects	Recommended <i>Phase matched cable pairs</i>	Alternative <i>Phase matched cable sets</i>	Comments
ML4062-HCB-112-MXPM70	2x MF53/2x8A_11MXPM/11PC185/152	NA	Sold separately by Huber+Suhner