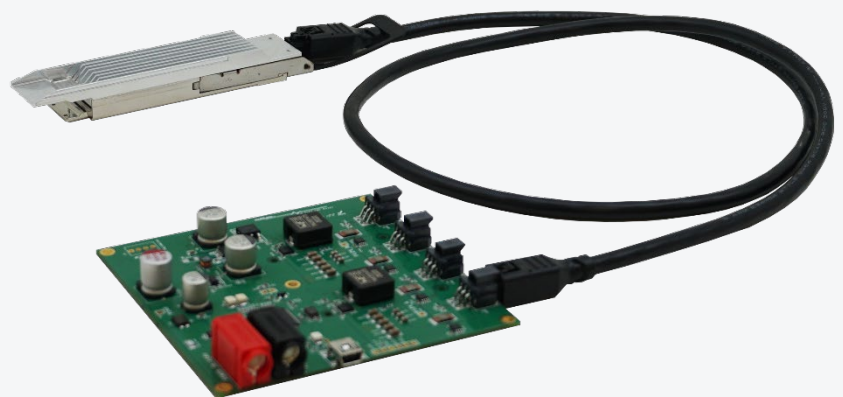


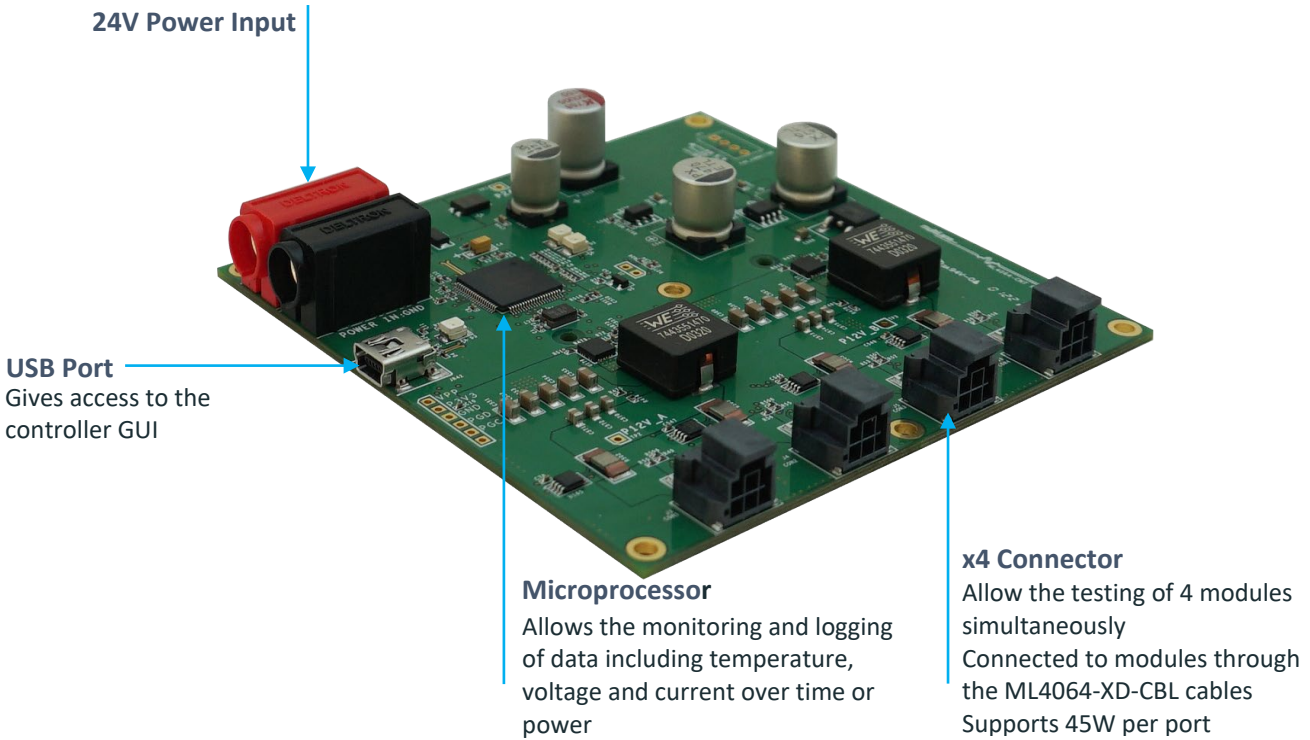
## OSFP-XD

### Technical Product Sheet

In an everchanging industry, new form factors are launched to support higher speeds like 800G and later, 1.6T. With the speed per lane increasing exponentially, the need for thermal and cooling tests also rises with new requirements and demands.

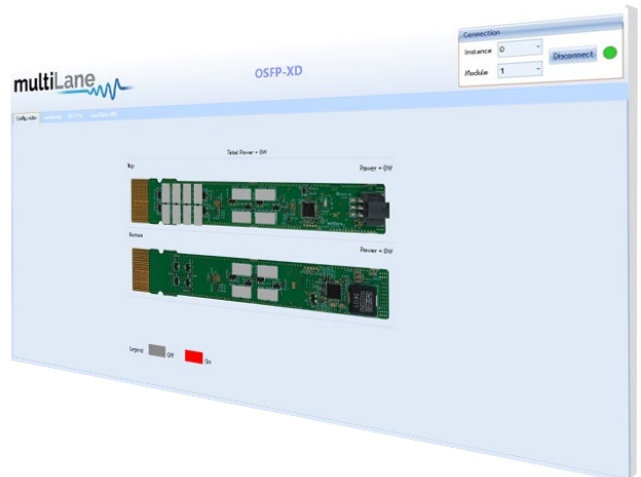
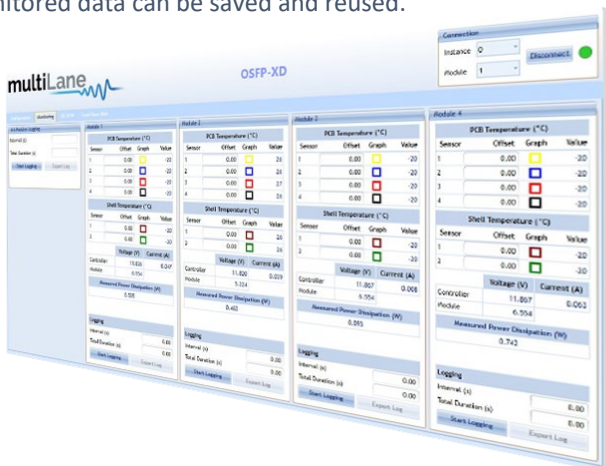
Multilane is offering an OSFP-XD thermal load with a controller board, with the goal of emulating transceiver thermal behavior, but also to test cooling systems.





Controller GUI

The ML4064-XD-CNT GUI is accessible through the USB connector on the controller board. It gives the user access to monitor the temperature, the heat or power dissipation, amongst other features, across 4 different modules simultaneously. Monitored data can be saved and reused.



Allows the user to monitor the temperature, current and voltage on all four modules simultaneously, with the ability to save and export the data.

Allows the user to set the power configuration they require, with the ability to save the configuration and reuse it.

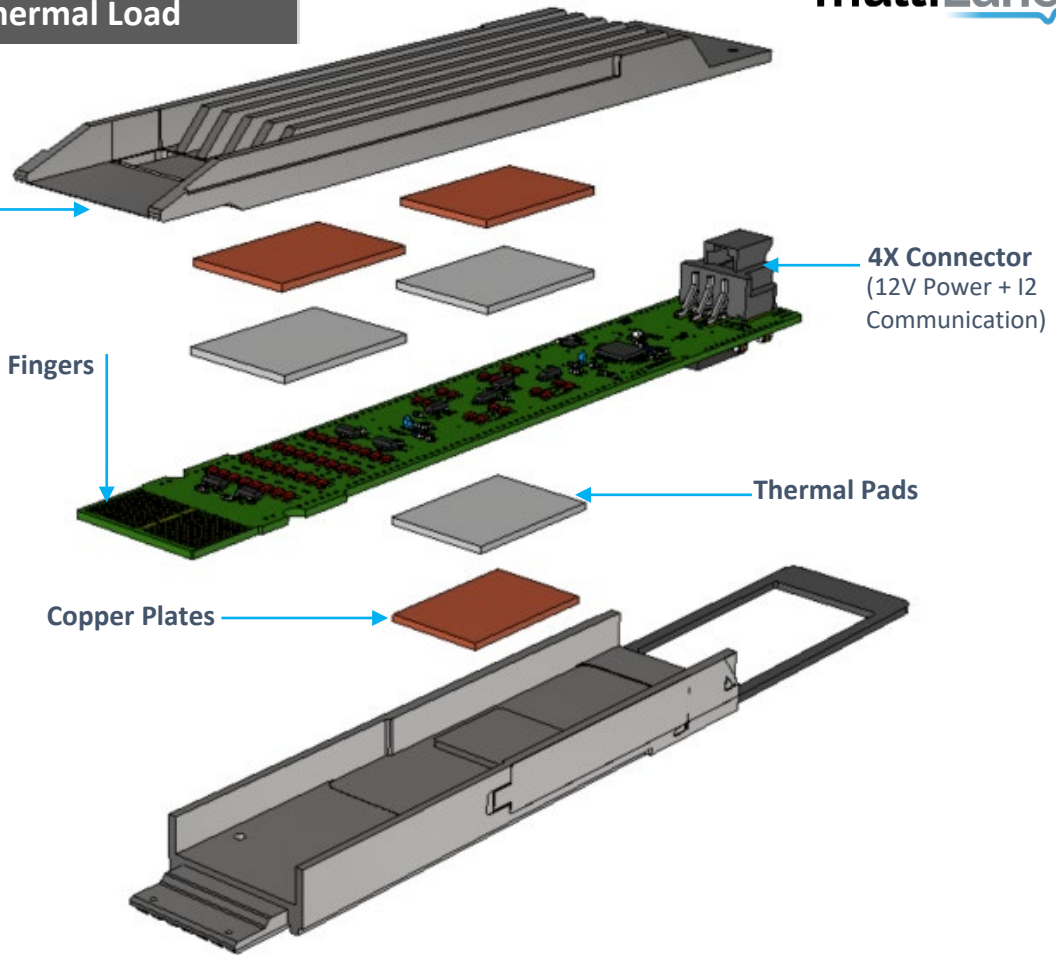
The GUI also has the below capabilities:

- I2C R/W tab: read from or write to the module EEPROM.
- Load/Save MSA: gives access to the full module EEPROM

**ML4064-XD-TL: Thermal Load**

**OSFP-XD Shell**

Available in different types  
Customization available

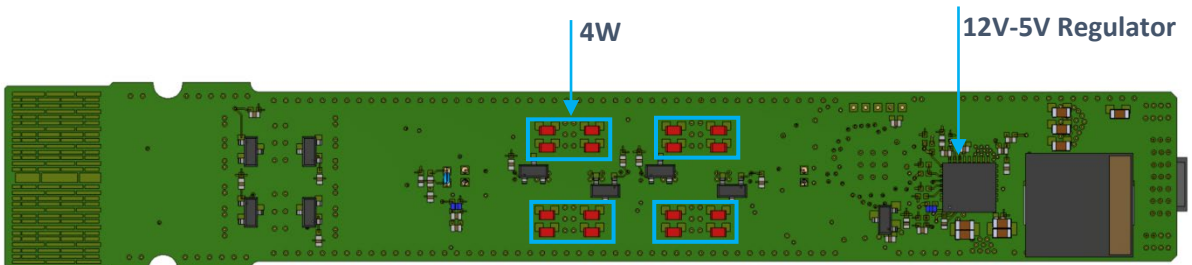


**ML4064-XD-TL: PCB Details**

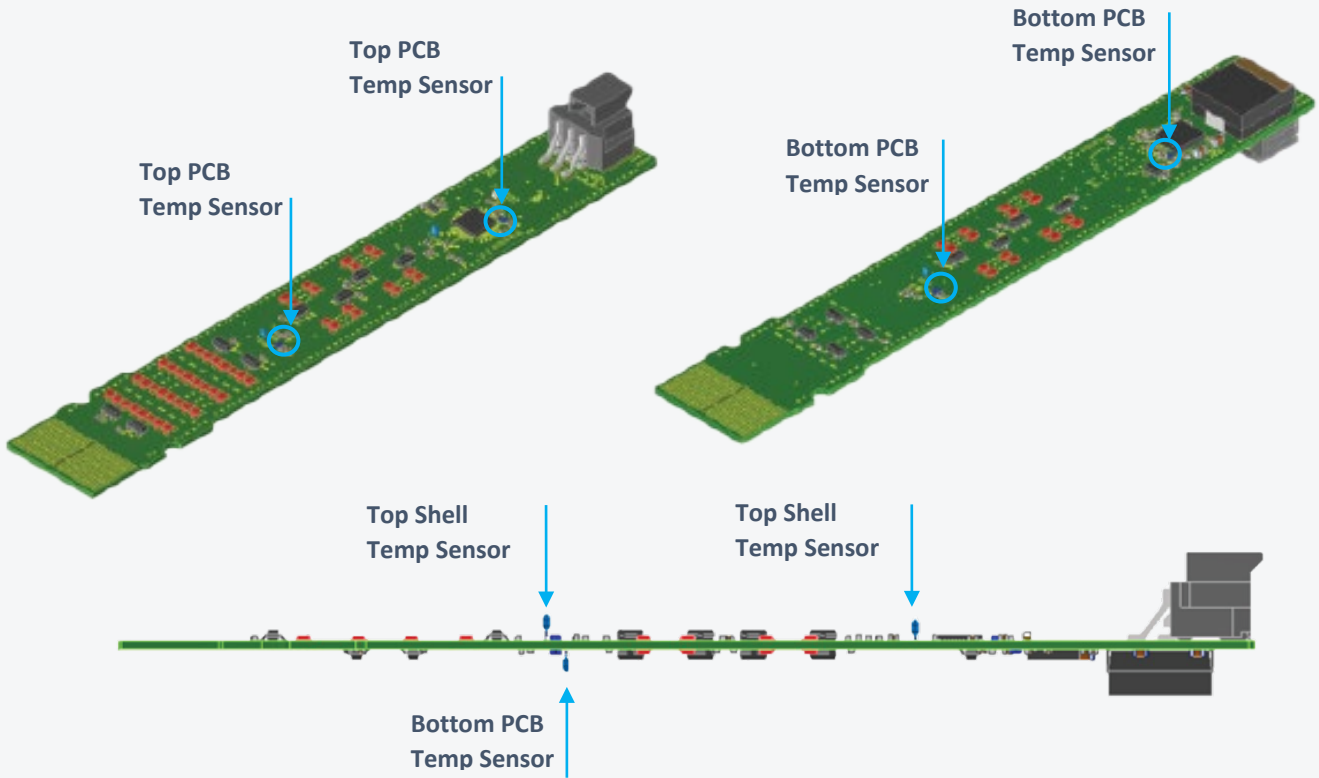
TOP



BOTTOM



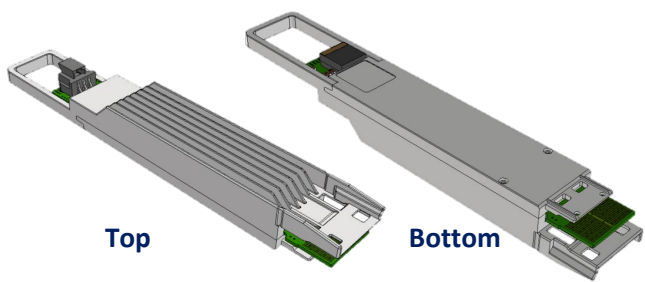
The ML4064-XD-TL contains 16 power spots, with only 11 that can be activated simultaneously to reach 44W of maximum power dissipation



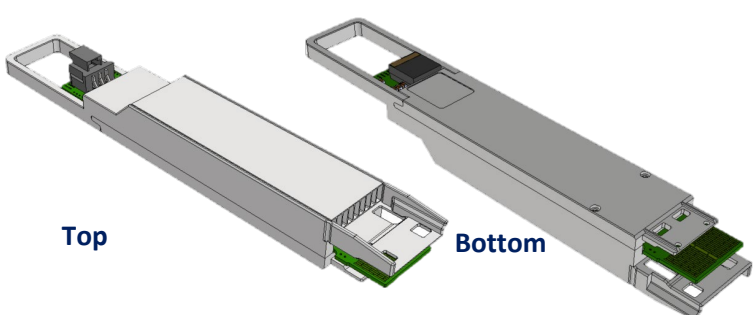
ML4064-XD-TL has 7 temperature sensors which help monitor the heat dissipation from the shell to the PCB. They are accessible through ML'S ML4064-XD-CNT GUI

Part Number	Specification
ML4064-XD-TL2-A	Open Top Fin + Flat Bottom
ML4064-XD-TL2-B	Closed Top Heat Sink + Flat Bottom
ML4064-XD-TL2-C	Open Top Fin + Fin Bottom
ML4064-XD-TL2-D	Closed Top Heat Sink + Fin Bottom
ML4064-XD-CNT	Controller Board

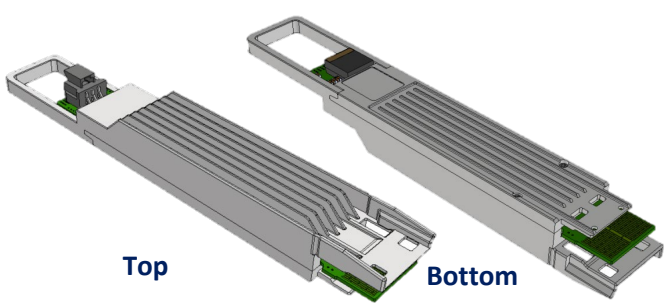
**ML4064-XD-TL2-A**



**ML4064-XD-TL2-B**



**ML4064-XD-TL2-C**



**ML4064-XD-TL2-D**

