

USER MANUAL

multiLane 

ML-Diagnostic GUI Tool

ATE Diagnostic GUI Manual 20220905a



Table of Contents

<i>Install ML-Diagnostic.exe</i>	3
<i>Changing the IP Address</i>	3
<i>Updating the Firmware:</i>	6
<i>Updating the FPGA:</i>	7

Install ML-Diagnostic.exe

- i. Request the latest ML-Diagnostic.exe GUI from the ATE solutions page of MultiLane's public website



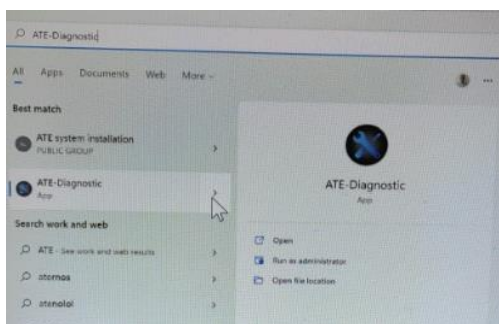
- ii. Install the ML-Diagnostic.exe program on a laptop

NOTE:

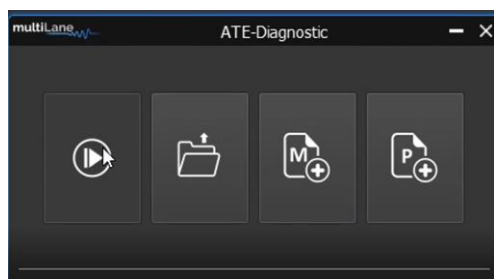
The filename above is just an example. The latest diagnostic will be found on the ATE solutions page of MultiLane's public website.

Changing the IP Address

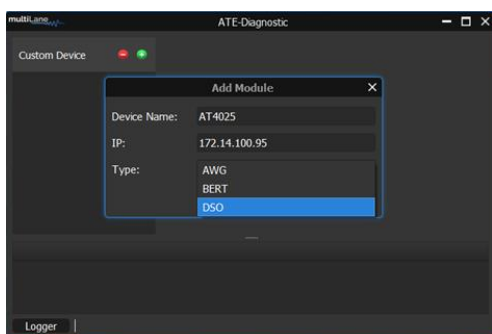
- i. Launch ATE-Diagnostic



- ii. Select the start button

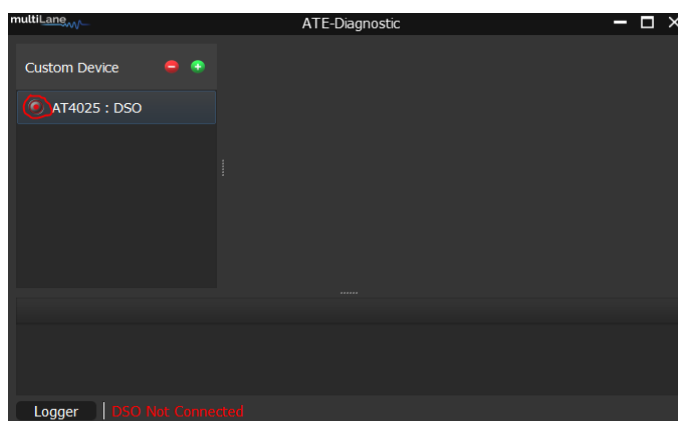


- iii. Select the instrument to change the IP address:

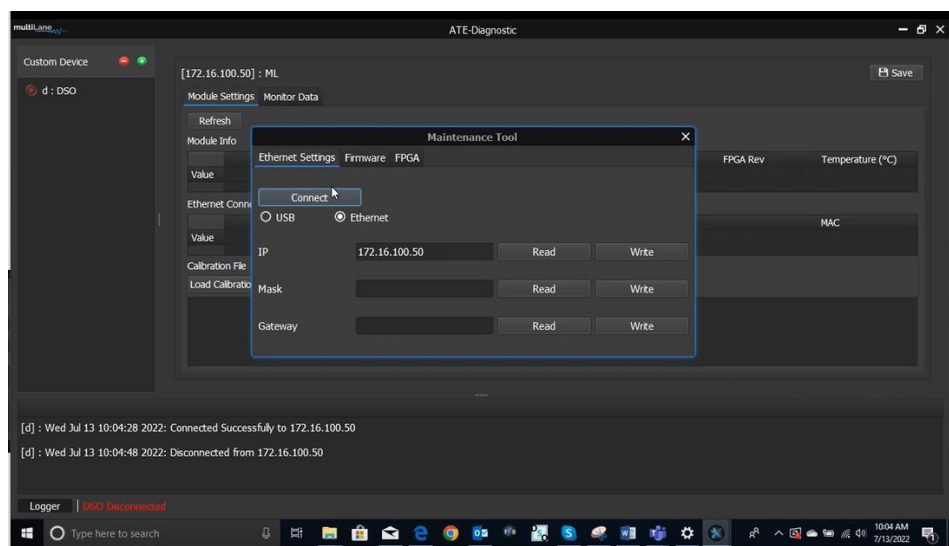


Write the device Name, and the corresponding IP address, and select the type (BERT, DSO, AWG). Select the Add button.

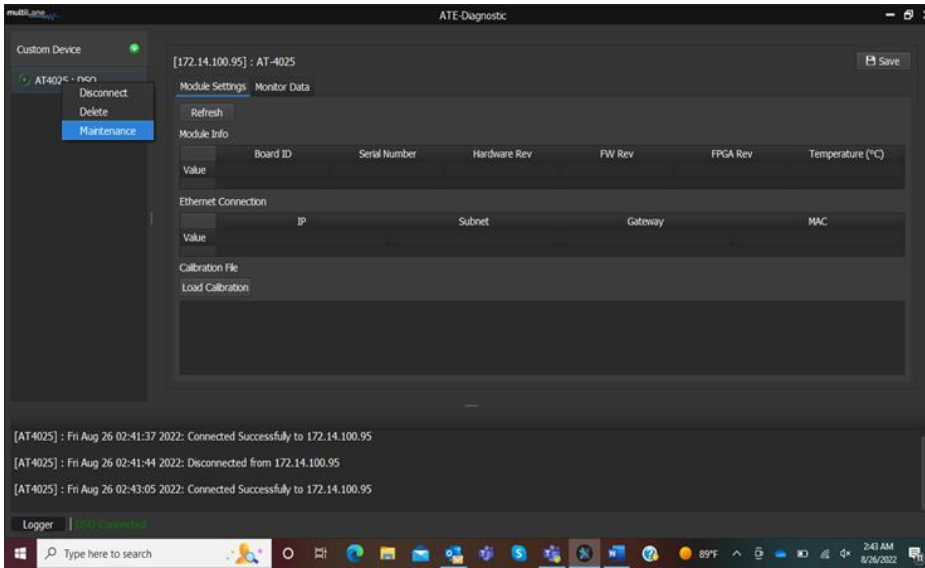
Click on the red circle next to the Device Name located on the left to connect to the instrument. When the device is connected, then the circle will turn green.



After connecting to the instrument, the red circle will turn green. Click on the **refresh** button to check the device settings.

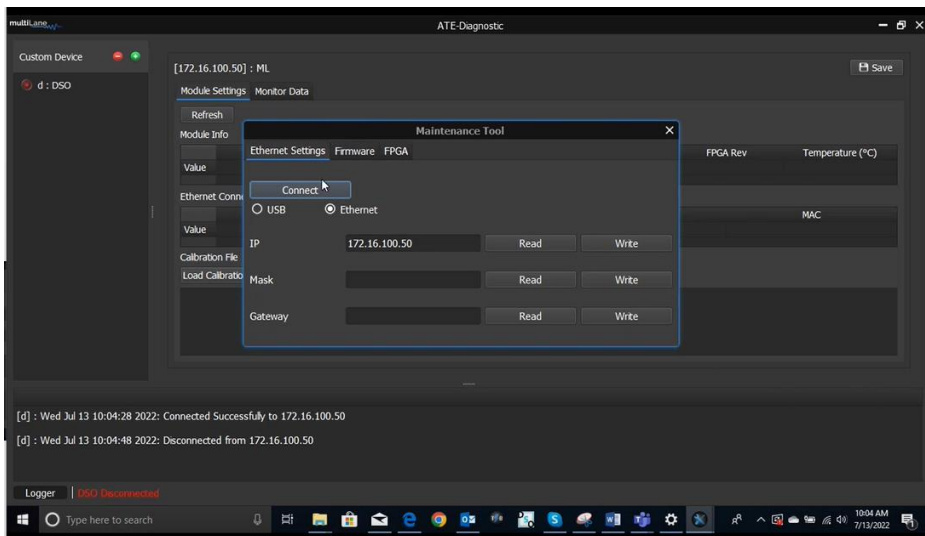


Right-click on the device name and click on the **Maintenance Tool** to change the IP address, Network Mask, or Gateway; apply write.



NOTE:

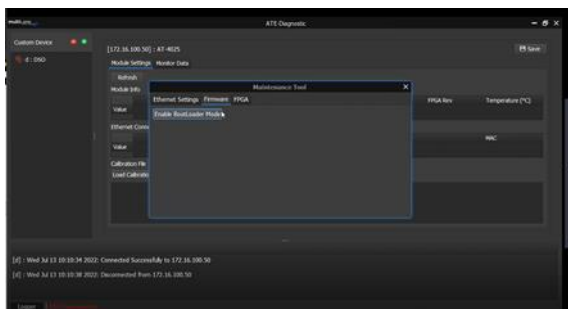
One should use a USB cable over an Ethernet cable if the cassette is removed and connected to AT1000.



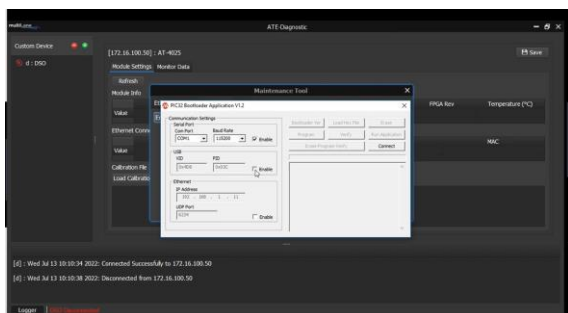
Updating the Firmware:

Contact MultiLane ATE Support to make sure you have the right Firmware file before programming. If the wrong Firmware is programmed onto a device, it could potentially break the unit.

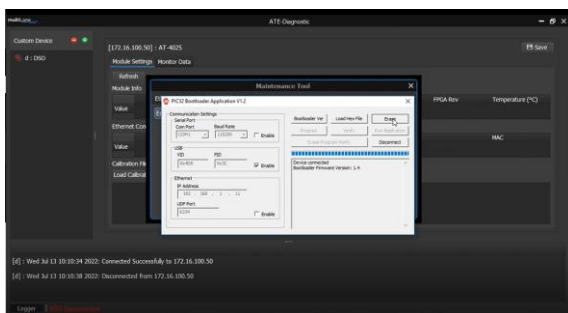
i. Select Firmware



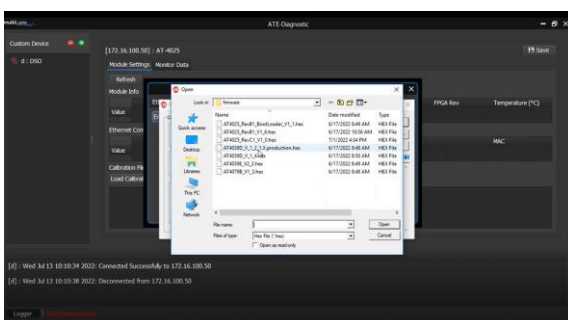
ii. Select a USB cable to connect.



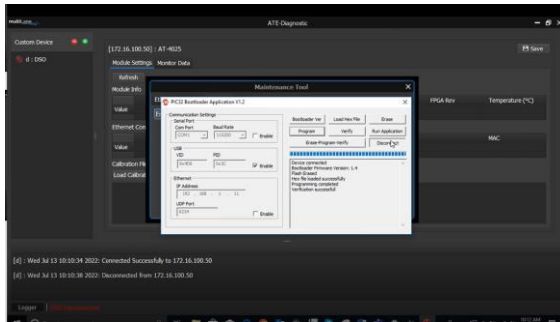
iii. Select ERASE



iv. Select the latest Firmware for loading.



v. Execute [Program] + [Verify]

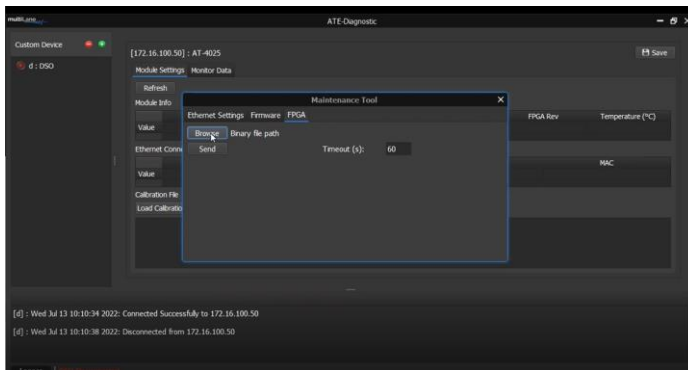


The application then needs to be run, the unit reconnect power cycled via the Diagnostic GUI, and the fact that the Firmware is reading as the updated version confirmed. *Do not skip this step.*

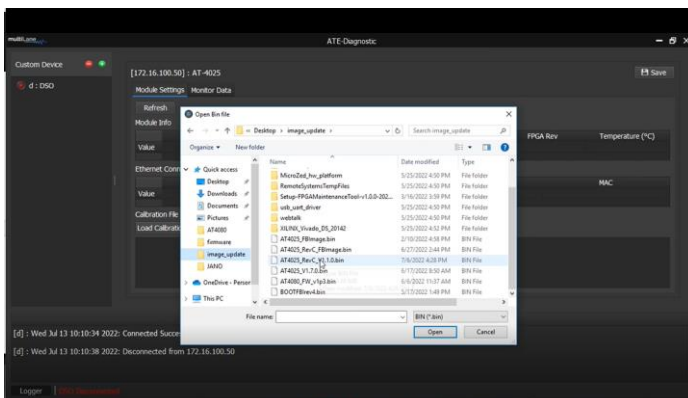
Updating the FPGA:

Installing the wrong FPGA has a high chance to break the unit, which MultiLane is not liable for. Please confirm with the MultiLane team before proceeding to make sure you have the right FPGA file before programming.

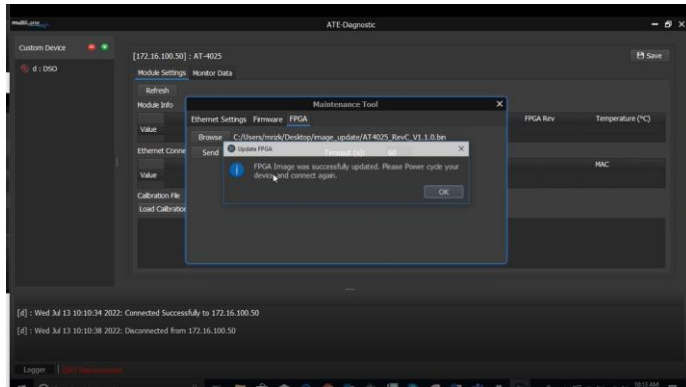
i. Select the FPGA option



ii. Load the latest FPGA program



iii. Upload the latest FPGA program



The unit reconnect then needs to be power cycled via the Diagnostic GUI, and the fact that the FPGA is reading as the updated version confirmed. *Do not skip this step.*