

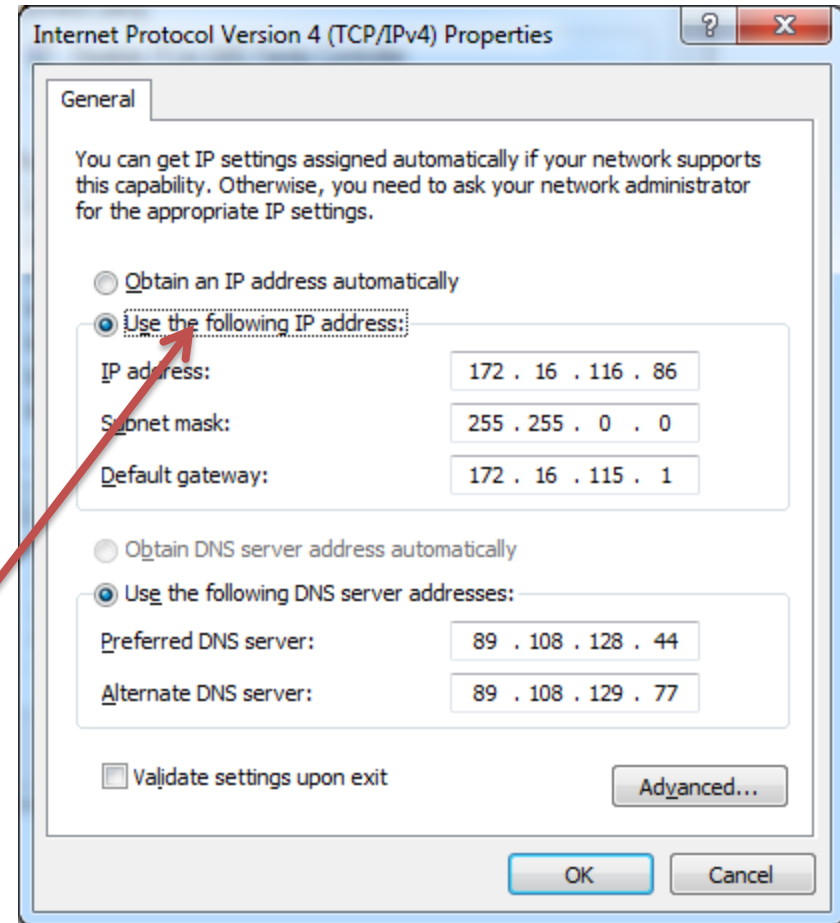
# ML IP Changer Guide

Changing Ethernet config using IP  
changer

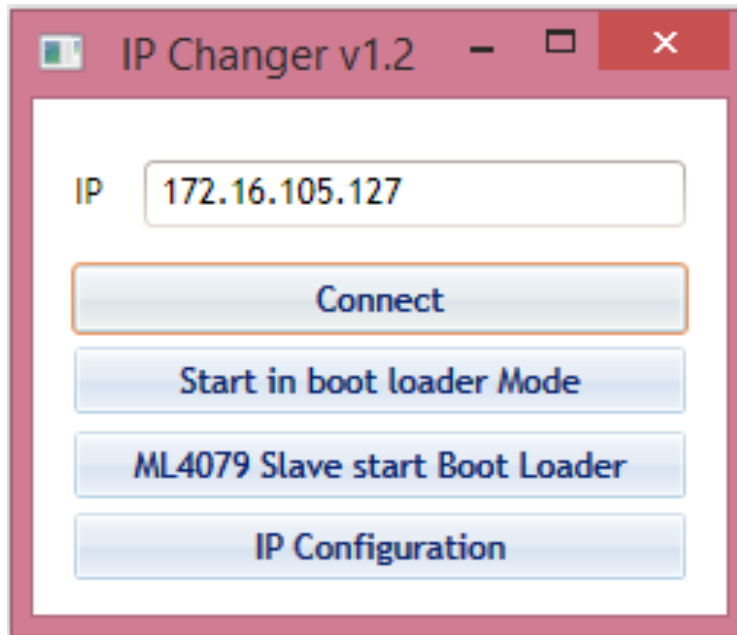
FW upgrade

# Change the static IP of the PC

Before choosing to connect via Ethernet go to you network settings and add a custom IP, in range with the ip on the hardware :  
Ex: put 172.16.100.101  
Mask : 255.255.0.0



# IP changer window



1-IP of the target

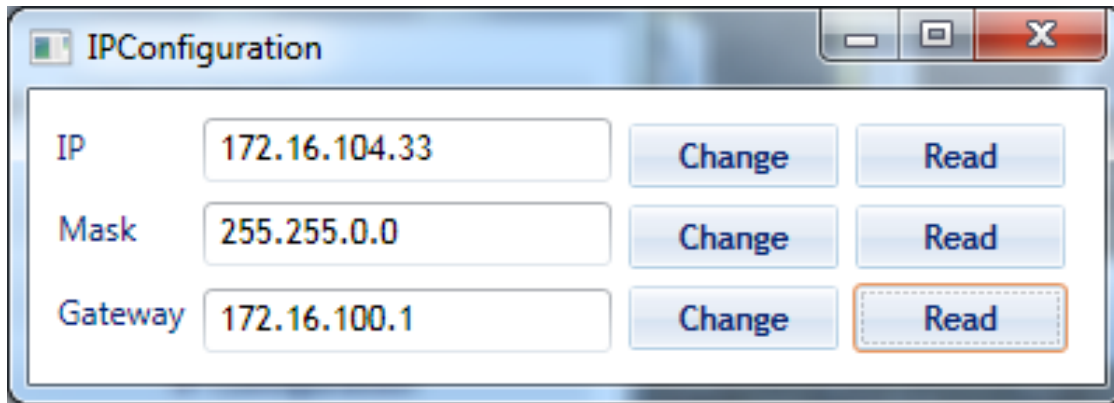
2-Press connect twice

Boot loader for ML4079 Slave only

IP configuration

Note that Boot loader is only for ML4079 Slave using USB

1-Press read to read all the configuration

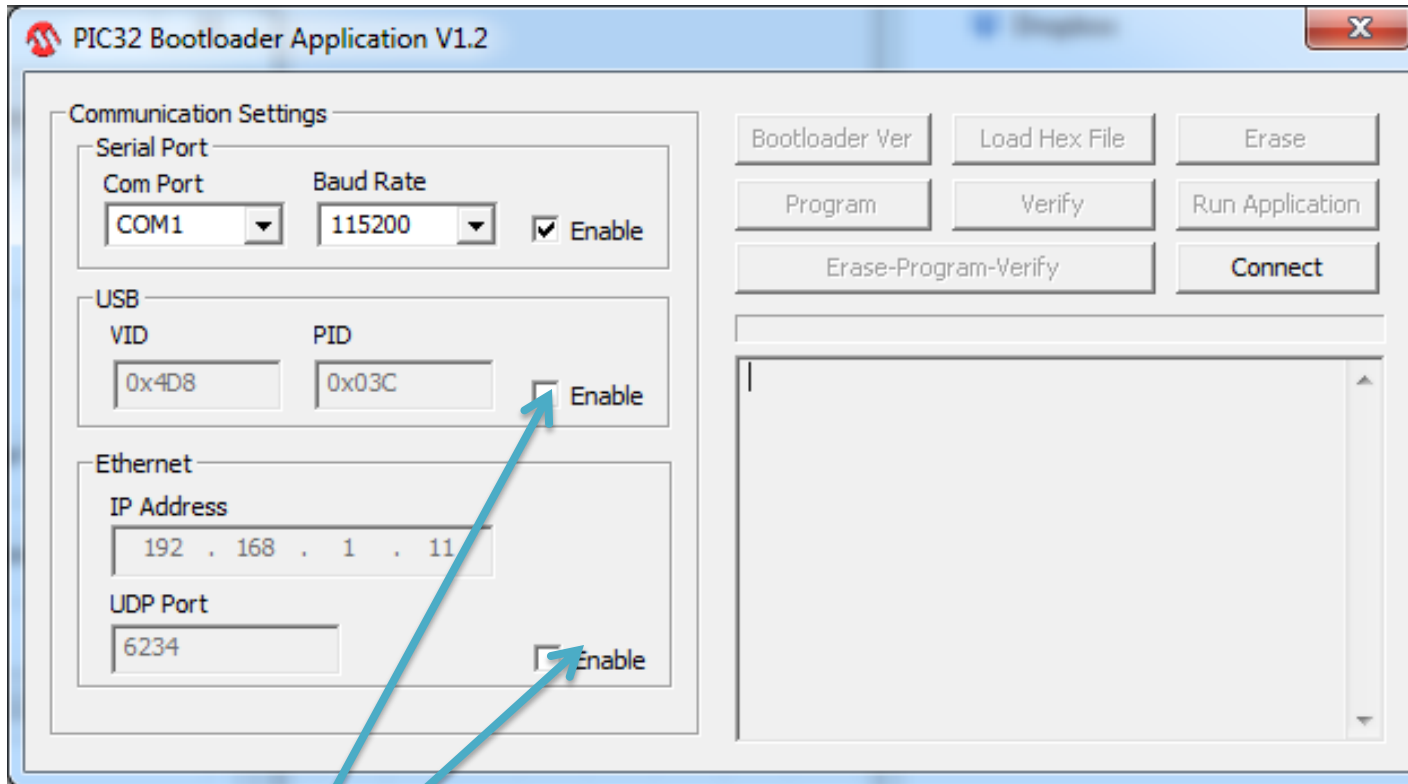


2-Press change to put the IP that is in range with your system

3-Power cycle for the changes to take effects.

# FW upgrade

- Press connect on the IP changer, then press start in bootloader mode.
- The device is now in bootloader mode so we can upgrade the FW
- Another application will open : pic32 ubl and you will have 3 connections options to do this change



- You can either choose USB or Ethernet connection to do this upgrade, USB is easier
- If you choose Ethernet, you will need to be in the range of 192.168.1.11
- Connect to either of these, load the hex file provided
- Press : Erase program verify
- Press run application
- In case of ML4079D you need to power cycle the slave and the master