

Bringing You Up to Speed

OFC, ThunderBERT, 400G Webinar Recording, and more

MultiLane Contributes to QSFP-DD800 Rev 6.0

The **QSFP-DD800** MSA group has released the revision 6.0 of their specifications, with MultiLane as a contributor. The new standard features 112G per lane, an increase in module power contact rating from 1 A to 1.5 A, and up to 25 W heat dissipation. Check out the full specifications [here](#).

Unlock ThunderBERT's Full Potential

Our ThunderBERT Graphical User Interface and programmer's guide are now fully available for all compatible MultiLane's BERTs. Validate your designs with an unparalleled array of diagnostic and tuning capabilities, which cover any desired line rate up to 800 Gbps depending on the BERT. Start using ThunderBERT to its fullest potential and download the [GUI](#) and [programmer's guide](#).

Visit Our HQ

Get a [video](#) tour of MultiLane's headquarters at Houmal Technology Park, Lebanon's latest high-tech hub.

Meet Our Experts at OFC!

Don't forget to join us at this year's Optical Fiber Communication Conference and Exhibition from **June 7 to June 11, 2021**.

Meet our team of experts at **booth number 1435**, watch video demos of our products, and learn all about our most cutting-edge instruments and interconnects. Click [here](#) for a preview of our exhibition page.

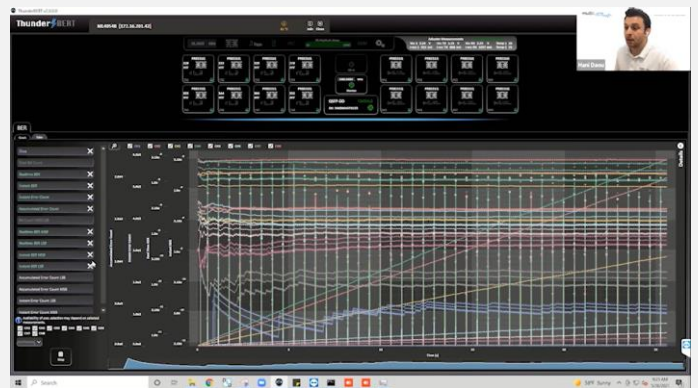


For any questions, please contact us at sales@multilaneinc.com

Catch Up on Our 400G Webinar

Missed our 400G webinar? Not to worry! The full recording is available [here](#).

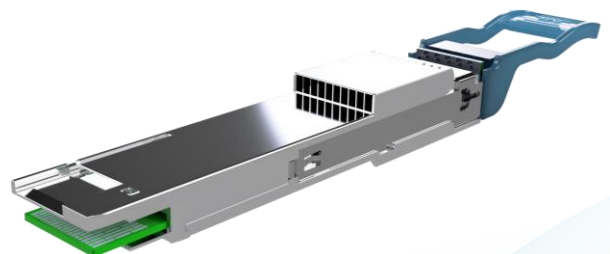
Learn all about MultiLane's suite of tools, powered by our flagship ThunderBERT GUI, to accelerate the adoption of new 400G interconnect technologies.



Featured Interconnect:

QSFP-DD800 30 W Loopback Module ML4062-LB2a-112

Validate the thermal capacity and signal integrity of your port, as well as compliance to the latest CMIS specification. The **ML4062-LB2a-112** provides a straightforward method to test QSFP-DD800 ports at every level of the switch production process. Operating at 112G per lane and following the CMIS Rev 4.0, this loopback is ideal for R&D validation, production testing, and field testing. Read the full specifications [here](#).



**FOR MORE UPDATES,
FOLLOW OUR SOCIAL MEDIA PLATFORMS!**

