

Solderless Board Mount Connector, 1.85 mm (F), Vertical Mount, Coplanar Waveguide

Package Contents

Connector	1 Pc
Screws	2 Pcs
Protection Cap	1 Pc

Connector Configuration

Connector	1.85 mm Female
Interface Type	Vertical Coplanar Waveguide

Materials

Description	Material	Finish
Center Pin	Beryllium Copper	Gold-Plated
Connector Body	Stainless Steel	Passivated

Electrical Specifications

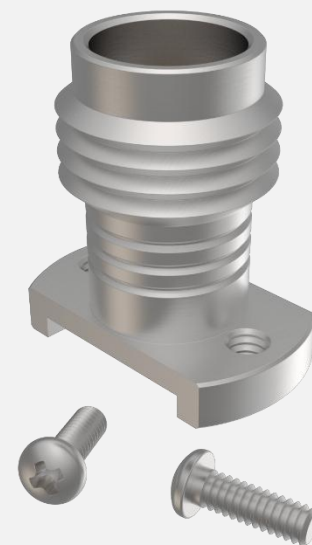
Impedance	50 Ohms
Frequency Range	DC to 67 GHz
V.S.W.R.	1.048 max. at 67 GHz
Return Loss	-32 dB at 67 GHz
Insertion Loss	-0.026 dB at 67 GHz

Mechanical Specifications

Male-Female Mating Cycles	≥ 500 Cycles
Installation Cycles	100

Environmental Specifications

Operating Temperature Range	-55 to +120 °C
-----------------------------	----------------



Features:

- Solderless
- Easy 2 Step Installation
- Compatible only with CPW traces
- Compression Mount



Solderless Board Mount Connector, 1.85 mm (F), Vertical Mount, Coplanar Waveguide

How to Order:

Customer Part Number: **MLBMC-185FVCW-X**

X	Screw Length	PCB Thickness
4	4.76 mm	≤1.5 mm
6	6.35 mm	1.5 – 4.6 mm
9	9.53 mm	4.6 – 6.3 mm
11	11.13 mm	6.3 - 9.4 mm

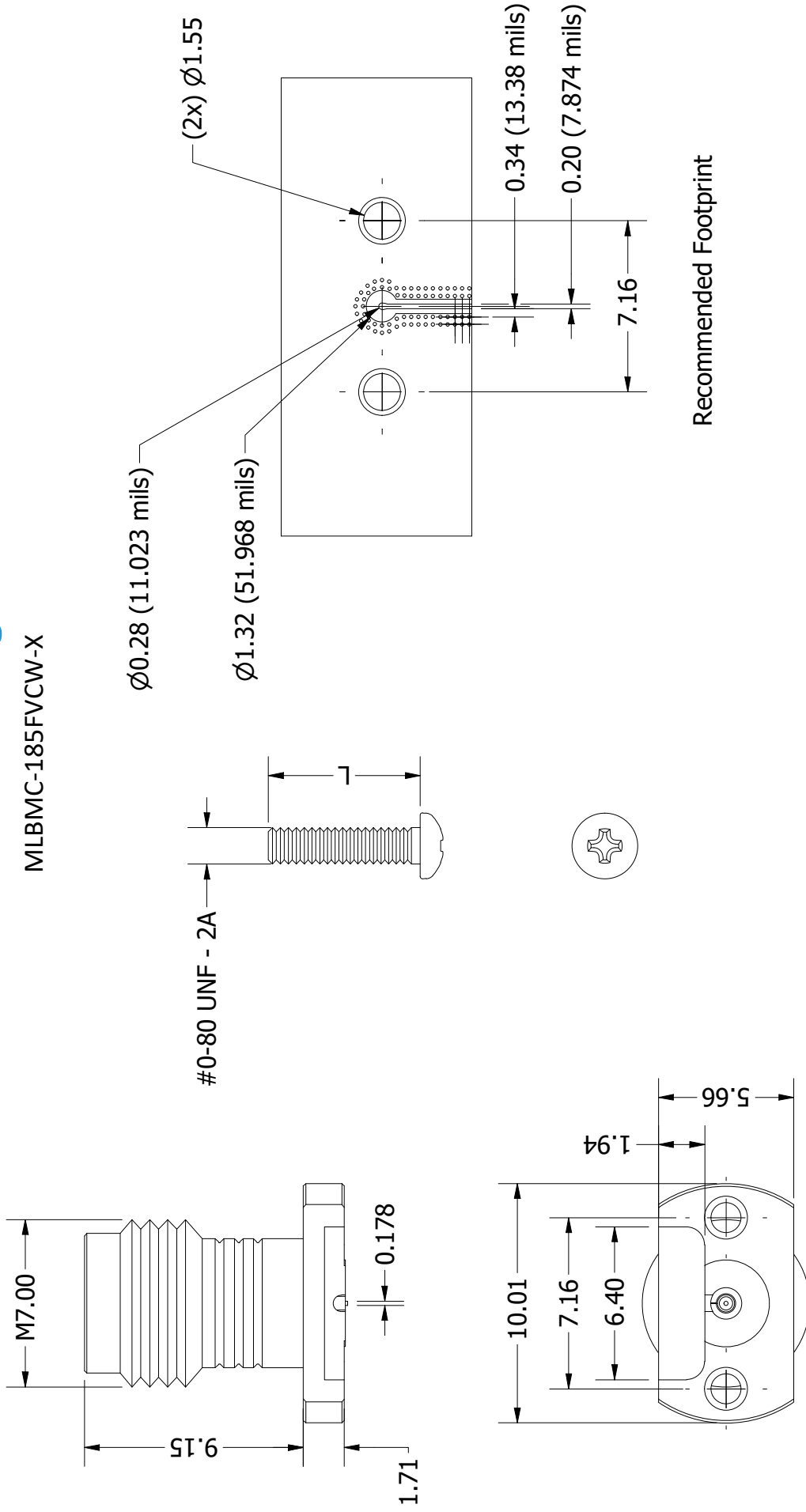
Example:

PN: *MLBMC-185FVCW-4*

Description: *Solderless Board Mount Connector, 1.85 mm (F), Vertical Mount, Coplanar Waveguide, with 4.76 mm long Screws*

CAD Drawing

MLBMC-185FVCW-X



Recommended Footprint

Title:

Solderless Board Mount Connector,
1.85 mm (F), Vertical Mount, Coplanar
Waveguide

Notes:

1. All dimensions are in millimetres unless otherwise specified.
2. These characteristics are typical and for reference.

Rev: A

Scale: 4:1

multiLane

www.multilaneinc.com
sales@multilaneinc.com