

Solderless Board Mount Connector, 2.92 mm (F), Edge Launch

Package Contents

Connector	1 Pc
Screws	2 Pcs
Locking Block	1 Pc
Protection Cap	1 Pc

Connector Configuration

Connector	2.92 mm Female
Interface Type	Edge Launch

Materials

Description	Material	Finish
Center Pin	Beryllium Copper	Gold-Plated
Connector Body	Stainless Steel	Passivated

Electrical Specifications

Impedance	50 Ohms
Frequency Range	DC to 40 GHz
V.S.W.R.	1.1 max. at 40 GHz
Return Loss	-27.3 dB at 40 GHz
Insertion Loss	-0.027 dB at 40 GHz

Mechanical Specifications

Male-Female Mating Cycles	≥ 500 Cycles
Installation Cycles	100

Environmental Specifications

Operating Temperature Range	-55 to +120 °C
-----------------------------	----------------



Features:

- Solderless
- Easy 3 Step Installation
- Compatible with both CPW & STL traces
- Compression Mount



Solderless Board Mount Connector, 2.92 mm (F), Edge Launch

How to Order:

Customer Part Number: **MLBMC-292FEEM-X**

X	Screw Length	PCB Thickness
4	4.5 mm	< 1 mm
6	6.5 mm	≤ 3 mm
11	11.3 mm	3 – 7.8 mm

Example:

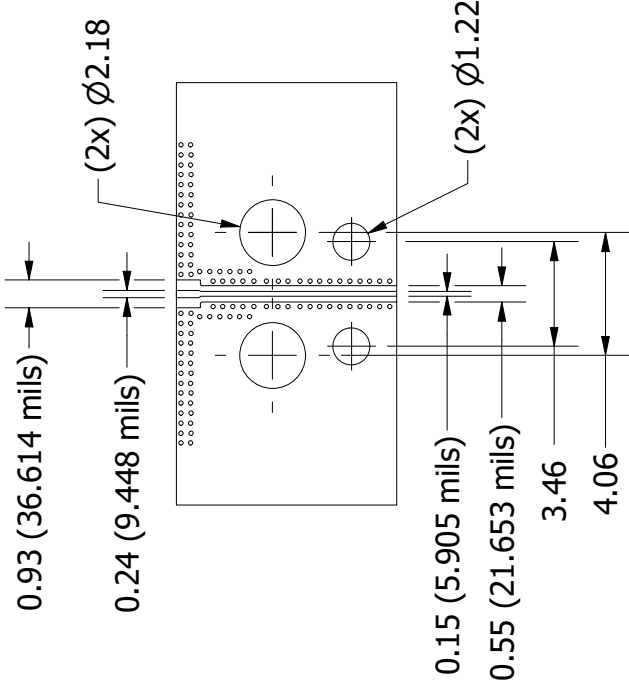
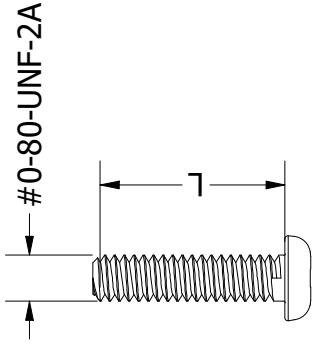
PN: *MLBMC-292FEEM-4*

Description: *Solderless Board Mount Connector, 2.92 mm (F), Edge Launch, EMI, with 4.5 mm long Screws*

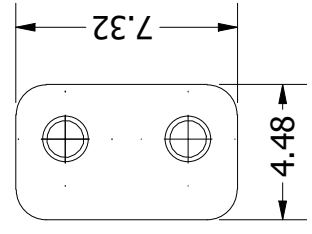
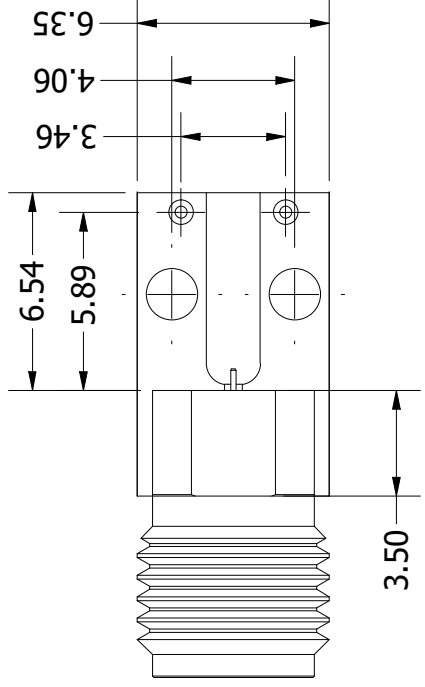
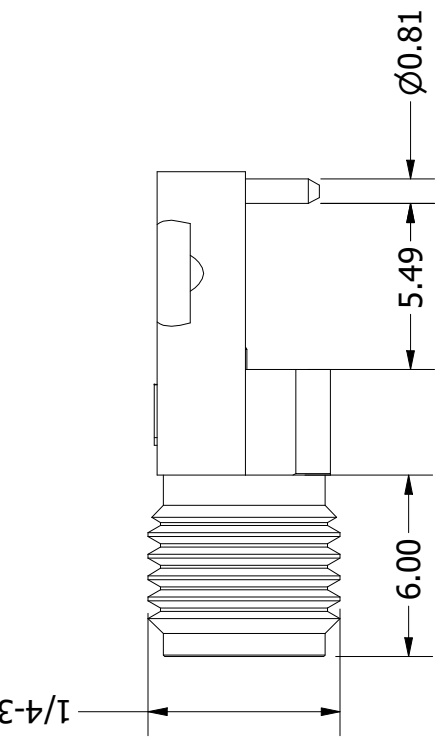
1/4-36 UNS - 2A

CAD Drawing

MLBMC-292FEEM-X



Recommended Footprint



Title:

Solderless Board Mount Connector, 2.92 mm (F), Edge Launch, EMI

Notes:

- 1. All dimensions are in millimetres unless otherwise specified.
- 2. These characteristics are typical and for reference.



www.multilaneinc.com
sales@multilaneinc.com

Rev: A

Scale: 4:1