

Solderless Board Mount Connector, 2.40 mm (F), Edge Launch

Package Contents

Connector	1 Pc
Screws	2 Pcs
Locking Block	1 Pc
Protection Cap	1 Pc

Connector Configuration

Connector	2.40 mm Female
Interface Type	Edge Launch

Materials

Description	Material	Finish
Center Pin	Beryllium Copper	Gold-Plated
Connector Body	Stainless Steel	Passivated

Electrical Specifications

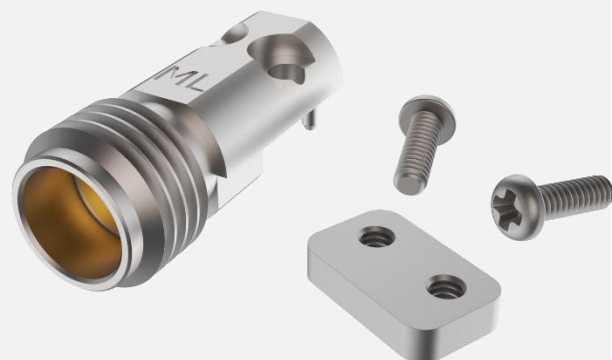
Impedance	50 Ohms
Frequency Range	DC to 50 GHz
V.S.W.R.	1.13 max. at 50 GHz
Return Loss	-24.36 dB at 50 GHz
Insertion Loss	-0.03 dB at 50 GHz

Mechanical Specifications

Male-Female Mating Cycles	≥ 500 Cycles
Installation Cycles	100

Environmental Specifications

Operating Temperature Range	-55 to +120 °C
-----------------------------	----------------



Features:

- Solderless
- Easy 3 Step Installation
- Compatible with both CPW & STL traces
- Compression Mount



Solderless Board Mount Connector, 2.40 mm (F), Edge Launch

How to Order:

Customer Part Number: **MLBMC-240FEEM-X**

X	Screw Length	PCB Thickness
4	4.5 mm	< 1 mm
6	6.5 mm	≤ 3 mm
11	11.3 mm	3 – 7.8 mm

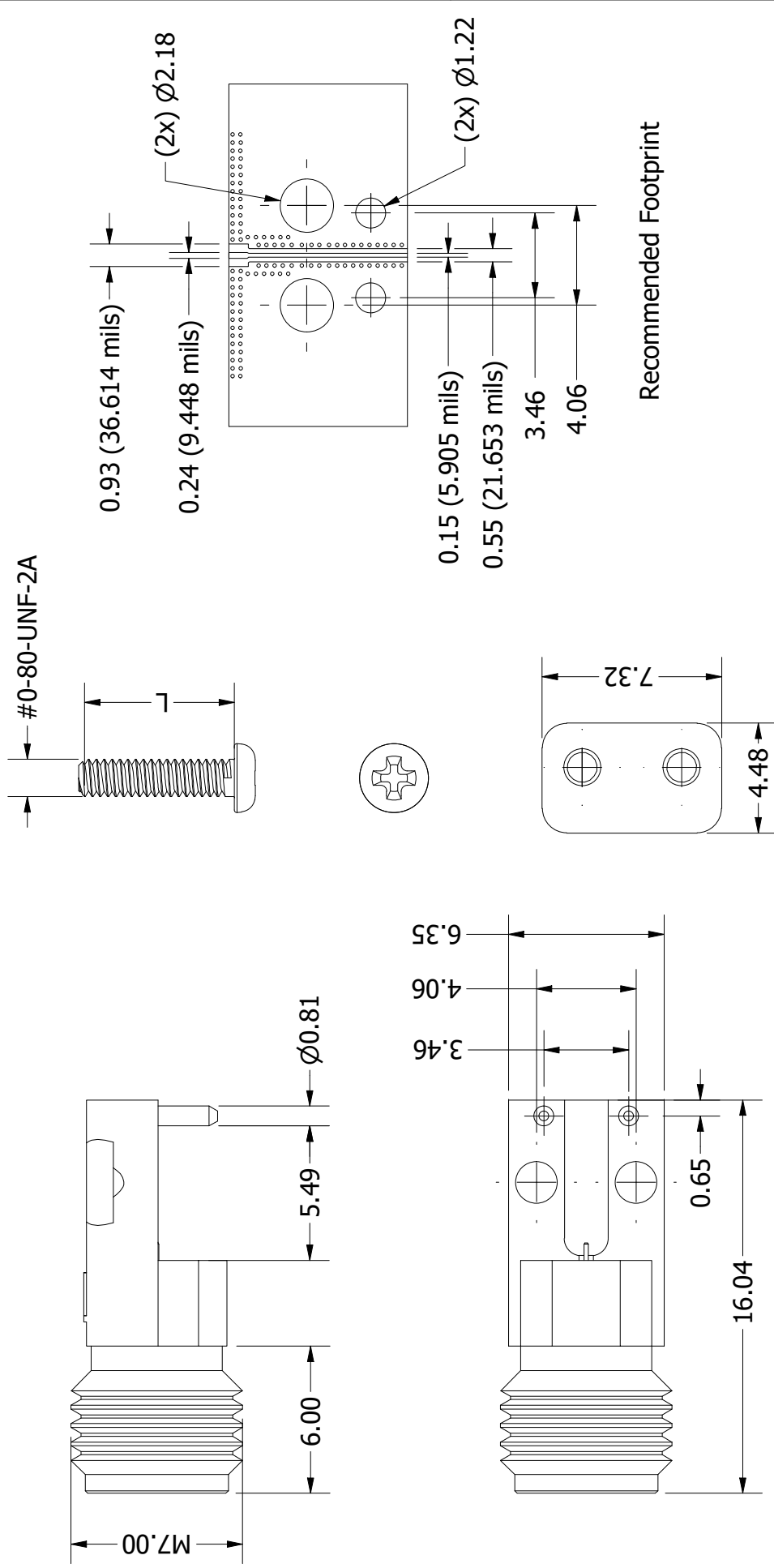
Example:

PN: *MLBMC-240FEEM-4*

Description: *Solderless Board Mount Connector, 2.40 mm (F), Edge Launch, EMI, with 4.5 mm long Screws*

CAD Drawing

MLBMC-240FEEM-X



Recommended Footprint

 <p>www.multilaneinc.com sales@multilaneinc.com</p>	<p>Title: Solderless Board Mount Connector, 2.40 mm (F), Edge Launch, EMI</p>	<p>Notes:</p> <ol style="list-style-type: none"> All dimensions are in millimetres unless otherwise specified. These characteristics are typical and for reference.
<p>Rev: A</p>		<p>Scale: 4:1</p>