

# Solderless Board Mount Connector, 2.40 mm (F), Vertical Mount, Stripline

## Package Contents

Connector	1 Pc
Screws	2 Pcs
Protection Cap	1 Pc

## Connector Configuration

Connector	2.40 mm Female
Interface Type	Vertical Stripline

## Materials

Description	Material	Finish
Center Pin	Beryllium Copper	Gold-Plated
Connector Body	Stainless Steel	Passivated

## Electrical Specifications

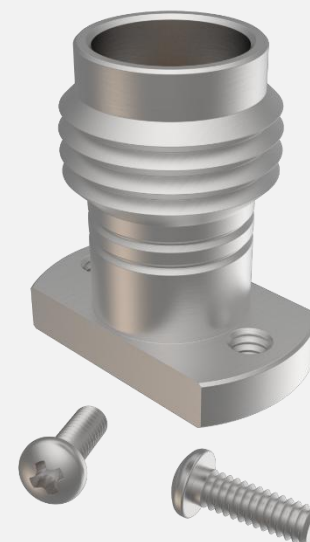
Impedance	50 Ohms
Frequency Range	DC to 50 GHz
V.S.W.R.	1.029 max. at 50 GHz
Return Loss	-36 dB at 50 GHz
Insertion Loss	-0.018 dB at 50 GHz

## Mechanical Specifications

Male-Female Mating Cycles	≥ 500 Cycles
Installation Cycles	100

## Environmental Specifications

Operating Temperature Range	-55 to +120 °C
-----------------------------	----------------



### Features:

- Solderless
- Easy 2 Step Installation
- Compatible only with STL traces
- Compression Mount



# Solderless Board Mount Connector, 2.40 mm (F), Vertical Mount, Stripline

## How to Order:

Customer Part Number:    **MLBMC-240FVSL-X**

<b>X</b>	<b>Screw Length</b>	<b>PCB Thickness</b>
<b>4</b>	4.76 mm	≤1.5 mm
<b>6</b>	6.35 mm	1.5 – 4.6 mm
<b>9</b>	9.53 mm	4.6 – 6.3 mm
<b>11</b>	11.13 mm	6.3 - 9.4 mm

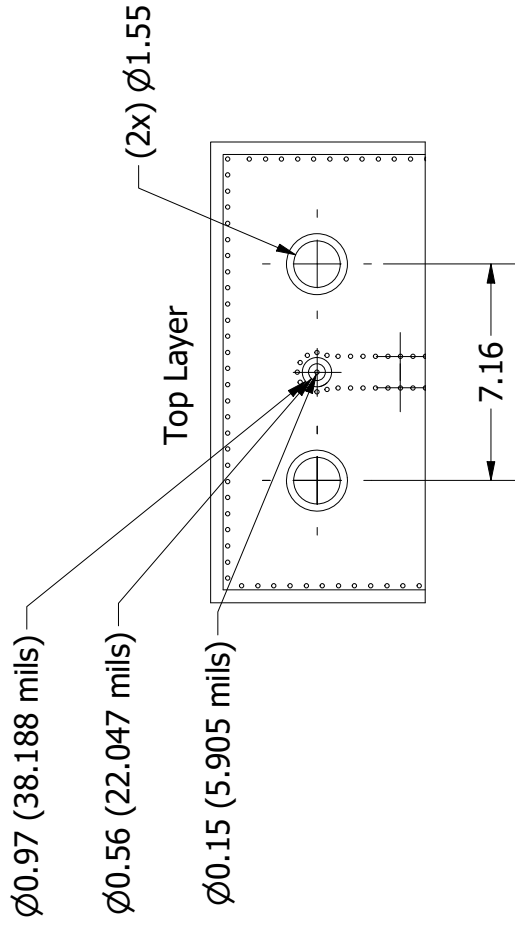
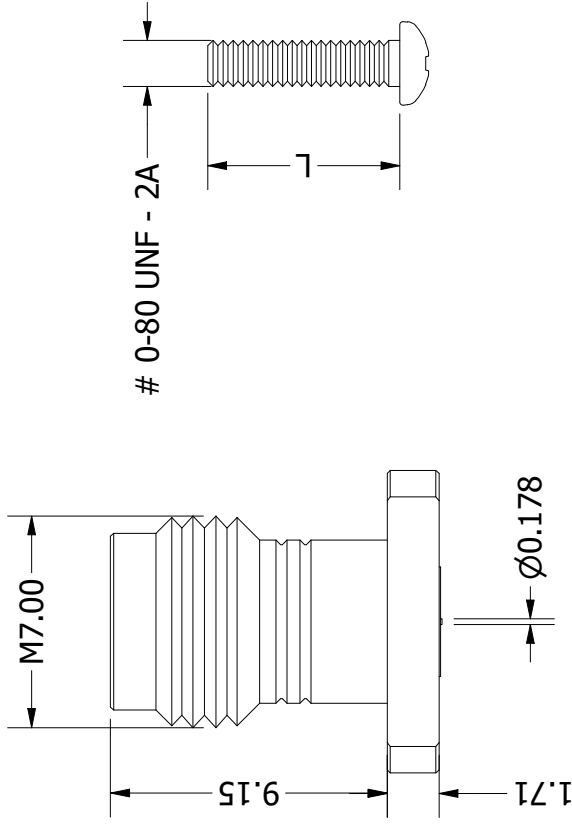
## Example:

PN:                    *MLBMC-240FVSL-4*

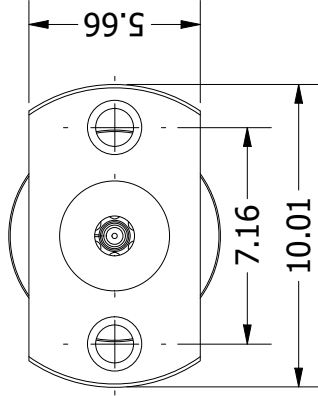
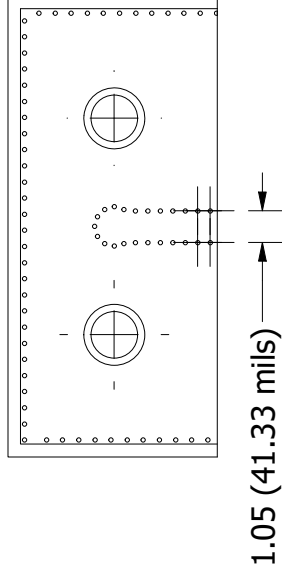
Description:    *Solderless Board Mount Connector, 2.40 mm (F), Vertical Mount, Stripline, with 4.76 mm long Screws*

# CAD Drawing

MLBMC-240FVSL-X



Bottom Layer



## Title:

Solderless Board Mount Connector, 2.40 mm (F), Vertical Mount, Stripline

## Notes:

1. All dimensions are in millimetres unless otherwise specified.
2. These characteristics are typical and for reference.

**multiLane**

www.multilaneinc.com  
sales@multilaneinc.com

Rev: A

Scale: 4:1